

Articulation Exercises

Articulations: A Study in Styles

Four connected quarter-notes (tenuto). The sound of one note "touches" the next note.

Four quarter-notes in "lifted" style. The attack is the same as tenuto, but the end of the note is tapered.

Four quarter-notes "lifted and short" (staccato). Separated and detached (half full value).

The first exercise shows four quarter notes on a treble clef staff. Below the staff are three rows of articulation diagrams: the first row shows four connected rectangles representing tenuto notes; the second row shows four tapered rectangles representing lifted notes; the third row shows four separated rectangles representing staccato notes.

Eighth-notes in connected style.

Eighth-notes in lifted and short style.

The second exercise shows two groups of eighth notes on a treble clef staff. The first group is in connected style, and the second is in lifted and short style. Below the staff are two rows of articulation diagrams: the first row shows connected eighth notes, and the second row shows separated eighth notes.

Eighth-note triplets in connected style.

Eighth-note triplets in a detached style (bounced).

The third exercise shows two groups of eighth-note triplets on a treble clef staff. The first group is in connected style, and the second is in a detached style. Below the staff are two rows of articulation diagrams: the first row shows connected triplets, and the second row shows detached triplets.

Sixteenth-notes in a connected style.

The fourth exercise shows a group of sixteenth notes on a treble clef staff in a connected style. Below the staff is one row of articulation diagrams showing connected sixteenth notes.

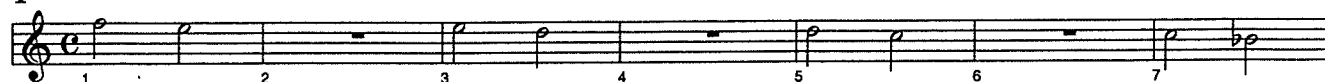
Articulation Exercise on Concert F

The exercise consists of five lines of musical notation on a treble clef staff, numbered 1 through 20. The first line contains measures 1-5, the second 6-10, the third 11-14, the fourth 15-18, and the fifth 19-20. Measures 10, 14, and 18 contain a whole note. Performance instructions include "* opt. ending on whole note" at the end of measures 10, 14, and 18. The notation includes quarter notes, eighth notes, and eighth-note triplets.

Long Tones

Concert F Descending

1

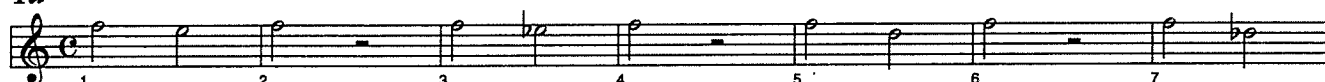


2

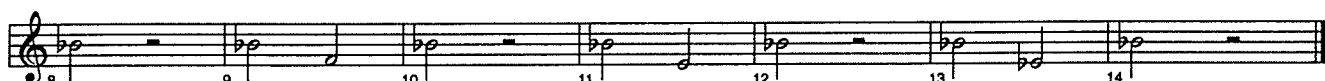
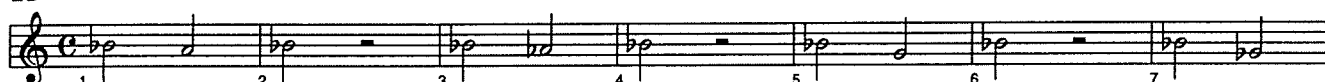


Long Tone 1

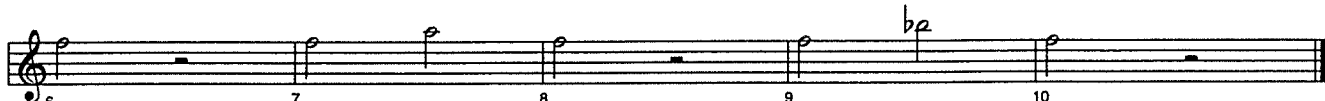
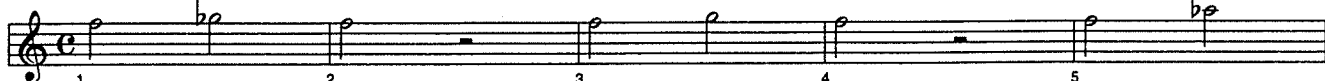
1a



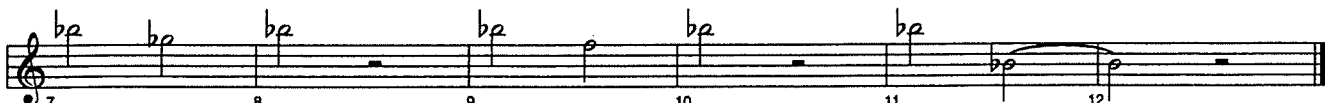
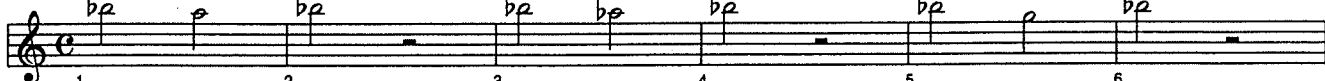
1b



1c



1d



Long Tone 2

Musical notation for Long Tone 2, consisting of four staves of music. The notes are: 1 (C4), 2 (D4), 3 (E4), 4 (F4), 5 (G4), 6 (A4), 7 (B4), 8 (C5), 9 (B4), 10 (A4), 11 (G4), 12 (F4), 13 (E4), 14 (D4), 15 (C4), 16 (B3), 17 (A3), 18 (G3), 19 (F3), 20 (E3), 21 (D3), 22 (C3), 23 (B2), 24 (A2), 25 (G2), 26 (F2).

Long Tone 3

3a *intervals of a minor 2nd* *intervals of a major 2nd*

intervals of a minor 3rd *intervals of a major 3rd*

intervals of a perfect 4th *intervals of an augmented 4th*

intervals of a perfect 5th

3b *intervals of a minor 2nd* *intervals of a major 2nd* *intervals of a minor 3rd*

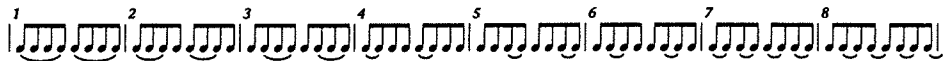
intervals of a major 3rd *intervals of a perfect 4th* *intervals of an augmented 4th*

Warm-Up Set 1

Option 1 (unison "lip slur" with brass)

Option 2 (octave slur study with brass lip slur)

Options 3, 4, & 5 (technical patterns with brass lip slurs)

Articulation Patterns: 

Warm-Up Set 2

Option 1 (unison "lip slur" with brass)

Musical notation for Option 1, consisting of three staves of music. The first staff contains measures 1-5, the second staff contains measures 6-10, and the third staff contains measures 11-14. Each measure features a slur over a pair of notes, with a 'b' (breath mark) above the first note of the pair.

Option 2 (octave slur study with brass lip slur)

Musical notation for Option 2, consisting of three staves of music. The first staff contains measures 1-5, the second staff contains measures 6-10, and the third staff contains measures 11-14. Each measure features a slur over a pair of notes, with a 'b' (breath mark) above the first note of the pair.

Options 3, 4, & 5 (technical patterns with brass lip slurs)

Articulation Patterns:

Musical notation for Options 3, 4, & 5, consisting of four staves of music. The first staff contains measures 1-4, the second staff contains measures 5-8, the third staff contains measures 9-12, and the fourth staff contains measures 13-14. Each measure features a slur over a pair of notes, with a 'b' (breath mark) above the first note of the pair.

Warm-Up Set 3

Option 1 (unison "lip slur" with brass)

Option 2 (octave slur study with brass lip slur)

Options 3, 4, & 5 (technical patterns with brass lip slurs)

Articulation Patterns: 

Warm-Up Set 4

Option 1 (unison "lip slur" with brass)

Option 2 (octave slur study with brass lip slur)

Options 3, 4, & 5 (technical patterns with brass lip slurs)

Articulation Patterns:

Technical Exercises in the Key of B \flat

Major Scale

Natural Minor

Harmonic Minor

Melodic Minor

Mini-Scale & Tonic Arpeggio

Scale Pattern 1 *articulations: 1 2 3 4 5 6 7 8

Scale Pattern 2*

Scale in Thirds*

Interval Study

Triads of the B \flat Scale

Chord Study 1*

Chord Study 2 - articulations:

Technical Exercises in the Key of F

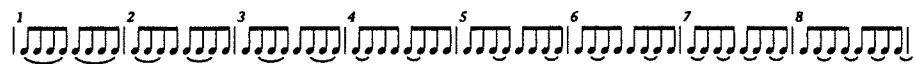
Major Scale

Natural Minor

Harmonic Minor

Melodic Minor

Mini-Scale & Tonic Arpeggio

Scale Pattern 1 *articulations: 

Scale Pattern 2*

Scale in Thirds*

Interval Study

Triads of the F Scale

Chord Study 1*

Chord Study 2 - articulations:

Technical Exercises in the Key of C

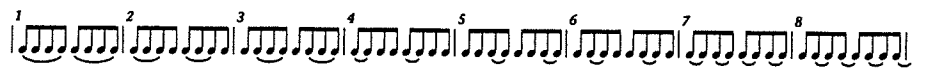
Major Scale

Natural Minor

Harmonic Minor

Melodic Minor

Mini-Scale & Tonic Arpeggio

Scale Pattern 1 *articulations: 

Scale Pattern 2*

Musical notation for Scale Pattern 2* in C major, 4/4 time. The piece consists of two staves. The upper staff features a melodic line with eighth-note patterns, and the lower staff provides a rhythmic accompaniment of eighth notes.

Scale in Thirds*

Musical notation for Scale in Thirds* in C major, 4/4 time. The upper staff plays a scale in thirds, while the lower staff plays a scale in eighth notes.

Interval Study

Musical notation for Interval Study in C major, 4/4 time. The single staff contains a sequence of intervals: two eighth notes, a quarter note, a half note, a whole note, and a dotted half note.

Triads of the C Scale

Musical notation for Triads of the C Scale in C major, 4/4 time. The single staff shows seven triads labeled I, ii, iii, IV, V, vi, and vii^o.

Chord Study 1*

Musical notation for Chord Study 1* in C major, 4/4 time. The piece consists of two staves. The upper staff has six measures of eighth-note patterns, and the lower staff has a corresponding eighth-note accompaniment.

Chord Study 2 - articulations:

Musical notation for Chord Study 2 - articulations in C major, 4/4 time. The upper staff features six measures of eighth-note patterns with articulation marks (accents) above the notes. The lower staff provides a simple eighth-note accompaniment.